

DEPARTMENT OF THE ARMY TECHNICAL MANUAL

**DIRECT SUPPORT AND GENERAL SUPPORT MAINTENANCE
REPAIR PARTS AND SPECIAL TOOLS LISTS (INCLUDING
DEPOT MAINTENANCE REPAIR PARTS AND SPECIAL TOOLS)
SPEECH AMPLIFIERS BC-614-E, BC-614-H,
AND BC-614-I
FSN 5820-164-7298**

Headquarters, Department of the Army, Washington, D.C.
8 March 1974

Current as of July 1973

	Paragraph	Page
Section I. INTRODUCTION		
scope	1-1	2
General	1-2	2
Explanation of columns	1-3	2
Special information	1-4	4
Location of repair parts	1-5	4
Abbreviations (Not applicable)	1-6	5
Reporting of equipment publication improvements	1-7	5
II. REPAIR PARTS LIST		6
III. SPECIAL TOOLS, TEST AND SUPPORT EQUIPMENT (Not applicable)		
IV. INDEX-FEDERAL STOCK NUMBER AND REFERENCE NUMBER CROSS-REFERENCE TO FIGURE AND ITEM NUMBER.....		14

This manual supersedes TM 11-5820-430-35P, 15 May 1962, including all changes.

TM11-5820-430-34P

S E C T I O N I I N T R O D U C T I O N

1 - 1 . S c o p e

This manual lists repair parts and special tools required for the performance of direct support, general support, and depot maintenance of the BC-614-E, BC-614-H, and BC-614-I. The PCCN for the equipment is GCRAFS for all models.

1 - 2 . G e n e r a l

This repair parts and special tools list is divided into the following sections:

a. Repair Parts List - Section II. A list of repair parts authorized for the performance of maintenance at the direct support, general support, and depot level. This repair parts list is arranged in alphabetical order.

b. Special Tools, Test and Support Equipment - Section III. Not applicable.

c. Index-Federal Stock Number and Reference Number Cross-Reference to Figure and Item Number Section IV. A list, in ascending numerical sequence, of all Federal stock numbers appearing in the listings, followed by a list, in alphameric sequence, of all reference numbers appearing in the listings. Federal stock number and reference numbers are cross-referenced to each illustration figure and item number or reference designation appearance.

1-3. Explanation of Columns

The following provides an explanation of columns found in the tabular list.

a. Source, Maintenance, and Recoverability Codes (SMR).

(1) Source code. Indicates the manner of acquiring support items for maintenance, repair, or overhaul of end items. Source codes are -

Code	Explanation
PA-	Item procured and stocked for anticipated or known usage.
PB-	Item procured and stocked for insurance purposes because essentiality dictates that a minimum quantity be available in the supply systems.
PC-	Item procured and stocked and which otherwise would be coded PA except that it is deteriorative in nature.

Code	Explanation
PD-	Support item, excluding support equipment, procured for initial issue or outfitting and stocked only for subsequent or additional initial issues or outfittings. Not subject to automatic replenishment.
PE-	Support equipment procured and stocked for initial issue or outfitting to specified maintenance repair activities.
PF-	Support equipment which will not be stocked but which will be centrally procured on demand.
PG-	Item procured and stocked to provide for sustained support for the life of the equipment. It is applied to an item peculiar to the equipment which because of probable discontinuance or shutdown of production facilities would prove uneconomical to reproduce at a later time.
KD-	An item of depot overhaul/repair kit and not purchased separately. Depot kit defined as a kit that provides items required at the time of overhaul or repair.
KF-	An item of a maintenance kit and not purchased separately. Maintenance kit defined as a kit that provides an item that can be replaced at organizational or direct support or general support levels of maintenance.
KB-	Item included in both a depot overhaul/repair kit and a maintenance kit.
MO-	Item to be manufactured or fabricated at organizational level.
MF-	Item to be manufactured or fabricated at direct support maintenance level.
MH-	Item to be manufactured or fabricated at general support maintenance level.
MD-	Item to be manufactured or fabricated at depot maintenance level.
AO-	Item to be assembled at organizational level.
AF-	Item to be assembled at direct support maintenance level.

Code	Explanation
AH-	Item to be assembled at general support maintenance level.
AD-	Item to be assembled at depot maintenance level.
XA-	Item is not procured or stocked because the requirements for the item will result in the replacement of the next higher assembly.
XB-	Item is not procured or stocked. If not available through salvage, requisition.
XC-	Installation drawing, diagram instruction sheet, field service drawing, that is identified by manufacturers' part number.
XB-	Support items can be requisitioned with justification.

NOTE

Cannibalization or salvage may be used as a source of supply for any items source coded above except those coded XA and aircraft support items as restricted by AR 700-42.

(2) *Maintenance code.* Maintenance codes are assigned to indicate the levels of maintenance authorized to USE and REPAIR support items. The maintenance codes are entered in the third and fourth positions of the Uniform SMR Code Format as follows:

(a) *Use (third position).* The maintenance code entered in the third position indicates the lowest maintenance level authorized to remove, replace, and use the support item. The maintenance code entered in the third position indicates one of the following levels of maintenance.

<i>Code</i>	<i>Application/Explanation</i>
O-	Support item is removed, replaced, used at the organizational level of maintenance.

NOTE

A code "C" may be used in this position to denote crew or operator maintenance performed within organizational maintenance.

F-	Support item is removed, replaced, used at the direct support maintenance level.
----	--

Code	Application/Explanation
H-	Support item is removed, replaced, used at the general support maintenance.
D-	Support items that are removed, replaced, used at depot only.

(b) *Repair (fourth position).* The maintenance code entered in the fourth position indicates whether the item is to be repaired and identifies the lowest maintenance level with the capability to perform complete repair (i.e., all authorized maintenance functions). When a maintenance code is not used a dash (-) sign is entered. For multiservice equipment/systems or when a code is entered, this position will contain one of the following maintenance codes as assigned by the service(s) that require the code:

Code	Application/Explanation
O -	The lowest maintenance level capable of complete repair of the support item is the organizational level
F -	The lowest maintenance level capable of complete repair of the support item is direct support.
H -	The lowest maintenance level capable of complete repair of the support item is general support.
D -	The lowest maintenance level capable of complete repair of the support item is the depot level.
L	Repair restricted to designated Specialized Repair Activity.
Z -	Nonrepairable. No repair is authorized.
B -	No repair is authorized. The item may be reconditioned by adjusting, lubricating, etc., at the user level. No parts or special tools are procured for the maintenance of this item.

(3) *Recoverability code.* Recoverability codes are assigned to support items to indicate the disposition action on unserviceable items. The recoverability code is entered in the fifth position of the uniform SMR Code Format as follows:

<i>Code</i>	<i>Explanation</i>
Z -	Nonrepairable item. When unserviceable, condemn and dispose at the level indicated in the first digit of the maintenance code.
O -	Repairable item. When uneconomically repairable, condemn and dispose at organizational level.

<i>Code</i>	<i>EXPLANATION</i>
F -	Repairable item. When uneconomically repairable, condemn and dispose at the direct support level.
H -	Repairable item. When uneconomical - ly repairable, condemn and dispose at the general support level.
D -	Repairable item. When beyond lower level repair capability, return to depot. Condemnation and disposal not authorized below depot level.
L -	Repairable item. Repair, condemnation, and disposal not authorized below depot/Specialized Repair Activity level.
A -	Item requires special handling or condemnation procedures because of specific reasons (i.e., precious metal content, high dollar value, critical material or hazardous material).

b. Federal Stock Number. Indicates the Federal stock number assigned to the item and will be used for requisitioning purposes.

c. Description. Indicates the Federal item name and a minimum description required to identify the item. The last line indicates the reference number followed by the applicable Federal Supply Code for manufacturer (FSCM) in parentheses. The FSCM is used as an element in item identification to designate manufacturer or distributor or Government agency, etc., and is identified in SB 708-42.

d. Unit of Measure (U/M). Indicates the standard or basic quantity by which the listed item is used in performing the actual maintenance function. This measure is expressed by a two-character alphabetical abbreviation; e.g., ea, in, pr, etc., and is the basis used to indicate quantities and allowances in subsequent columns. When the unit of measure differs from the unit of issue, the lowest unit of issue that will satisfy the required units of measure will be requisitioned.

e. Quantity Incorporated in Unit. This column indicates the quantity of the item used in the equipment. Subsequent appearances of the same item in the same assembly are indicated by the letters "REF".

f. 30-Day DS/GS Maintenance Allowances.

NOTE

Allowances in GS column are for GS maintenance only.

(1) The repair parts indicated by asterisk entries in separate allowance columns for DS and GS represent those authorized for use at that category of maintenance to be requisitioned on an "as required" basis, until stockage is based on demand in accordance with AR 710-2.

(2) Allowance quantities are indicated in the special tool lists section for special tools, TMDE, and other support equipment.

g. 1--Year Allowances Per 100 Equipments/Contingency Planning Purposes. Column intentionally left blank.

h. Depot Maintenance Allowance Per 100 Equipments. This column indicates opposite the first appearance of each item the total quantity authorized for depot maintenance of 100 equipments.

i. Illustration. This column is divided as follows:

(1) *Figure number.* Indicates the figure number of the illustration on which the item is shown in TM 11-5054.

(2) *Item number.* Indicates the item number or reference designation used to reference the item in the illustration.

1-4. Special Information

a. Usable on codes are included in column 3. Uncoded items are applicable to all models. Identification of the usable on codes used in this publication are -

<i>Code</i>	<i>Used On</i>
A4A	BC-614-E
A4B	BC-614-H
A4C	BC-614-I

b. The following publications pertain to the equipment and its components:

TM 11-5054 Speech Amplifier
BC-614-E, -F, -H,
and -I.

TM 11-5820-430-20P Organizational
Maintenance Repair Parts and Special Tools Lists:
Speech Amplifiers
BC-614-E, BC-614-H, and BC-614-I.

1-5. Location of Repair Parts

a. This manual contains one cross-reference index (sec IV) to be used to locate a repair part when either the Federal stock number or reference number (manufacturer's part number) is known. The first column in the index is prepared in numer

ical or alphanumeric sequence in ascending order. The reference numbers (manufacturer's part numbers) are listed immediately following the last listed Federal stock number in the index of Federal stock numbers.

b. When the Federal stock number or reference number is known, follow the procedures given in (1) and (2) below.

(1) Refer to the index of Federal stock numbers (sec IV) and locate the Federal stock number or reference number. The FSN and reference number are cross-referenced to the applicable figure and item number or reference designation.

(2) Refer to the repair parts list (sec II) and locate the figure number (col 10a) and item number or reference designation (col 10b) as noted in the FSN index.

c. When the figure and item number or reference designation are known, scrutinize

columns 10a and 10b of the repair parts list (sec II) until the item is located.

d. When the FSN, reference number, figure number, item number and reference designation are not known, scrutinize column 3 of the repair parts list (sec II), which is arranged in alphabetical order.

1 - 6 . A b b r e v i a t i o n s

Not applicable.

1-7. Reporting of Equipment Publication Improvements

The reporting of errors, omissions, and recommendations for improving this publication by the individual user is encouraged. Reports should be submitted on DA Form 2028 (Recommended Changes to Publications) and forwarded direct to Commander, US Army Electronics Command, ATTN: AMSEL-MA-CR, Fort Monmouth, N.J., 07703.

(Next printed page is 6)

SECTION II

T M 1 1 - 5 8 2 0 - 4 3 0 - 3 4 P

(1) SMR CODE	(2) FEDERAL STOCK NUMBER	(3) DESCRIPTION REFERENCE NUMBER & MFR. CODE USABLE ON CODE		(4) UNIT QTY INC IN UNIT	(6) 30-DAY DS MAINT ALLOWANCE			(7) 30-DAY GS MAINT ALLOWANCE			(8) 1-YR ALW PER 100 EQUIP CNTGCT	(9) DEPOT MAINT ALW PER 100 EQUIP	(10) ILLUSTRATION	
					(a)	(b)	(c)	(a)	(b)	(c)			(a)	(b)
					1-20	21-50	51-100	1-20	21-50	51-100			FIGURE NO.	ITEM NO.
PAFHD	6625-668-9278	AMMETER M101..... MR26M3000CMAR (81349)		EA	1	*	*	*	*	*	*	3	3	M101
PAFHD	6625-668-6716	AMMETER M101..... MR36M3000CMA (81349) A4A		EA	1	*	*	*	*	*	*	3	27	M101
PAFZZ	5910-543-9788	CAPACITOR, FIXED, ELECTROLYTIC C108 10.. MF M40PCTP85PCT 450 VDCW CE42F100R (81350)		EA	6	*	*	*	*	*	*	3	3	C108
PAFZZ	5910-543-9788	CAPACITOR, FIXED, ELECTROLYTIC C109 10.. MF M40PCTP85PCT 450 VDCW CE42F100R (81350)		EA	REF	*	*	*	*	*	*	3	3	C109
PAFZZ	5910-543-9788	CAPACITOR, FIXED, ELECTROLYTIC C111 10.. MF M40PCTP85PCT 450 VDCW CE42F100R (81350)		EA	REF	*	*	*	*	*	*	3	3	C111
PAFZZ	5910-543-9788	CAPACITOR, FIXED, ELECTROLYTIC C112 10.. MF M40PCTP85PCT 450 VDCW CE42F100R (81350)		EA	REF	*	*	*	*	*	*	3	3	C112
PAFZZ	5910-543-9788	CAPACITOR, FIXED, ELECTROLYTIC C113 10.. MF M40PCTP85PCT 450 VDCW CE42F100R (81350)		EA	REF	*	*	*	*	*	*	3	3	C113
PAFZZ	5910-543-9788	CAPACITOR, FIXED, ELECTROLYTIC C115 10.. MF M40PCTP85PCT 450 VDCW CE42F100R (81350)		EA	REF	*	*	*	*	*	*	3	3	C115
PAFZZ	5910-128-3054	CAPACITOR, FIXED, ELECTROLYTIC C104 4... SECT 10-10-30-30 MF M32PCTP85PCT 150 VDCW 1899 (74861) A4A		EA	4	*	*	*	*	*	*	3	27	C104
PAFZZ	5910-128-3054	CAPACITOR, FIXED, ELECTROLYTIC C107 4... SECT 10-10-30-30 MF M32PCTP85PCT 150 VDCW 1899 (74861) A4A		EA	REF	*	*	*	*	*	*	3	27	C107
PAFZZ	5910-128-3054	CAPACITOR, FIXED, ELECTROLYTIC C110 4... SECT 10-10-30-30 MF M32PCTP85PCT 150 VDCW 1899 (74861) A4A		EA	REF	*	*	*	*	*	*	3	27	C110
PAFZZ	5910-128-3054	CAPACITOR, FIXED, ELECTROLYTIC C120 4... SECT 10-10-30-30 MF M32PCTP85PCT 150 VDCW 1899 (74861) A4A		EA	REF	*	*	*	*	*	*	3	27	C120
PAFZZ	5910-112-7839	CAPACITOR, FIXED, ELECTROLYTIC C104 10.. MF M40PCTP85PCT 300 VDCW CE63C100N (81349)		EA	2	*	*	*	*	*	*	3	3	C104
PAFZZ	5910-112-7839	CAPACITOR, FIXED, ELECTROLYTIC C107 10.. MF M40PCTP85PCT 300 VDCW CE63C100N (81349)		EA	REF	*	*	*	*	*	*	3	3	C107
PAFZZ	5910-543-9267	CAPACITOR, FIXED, ELECTROLYTIC C110 50.. MF M40PCTP85PCT 50 VDCW CE63C500G (81350)		EA	2	*	*	*	*	*	*	3	3	C110
PAFZZ	5910-543-9267	CAPACITOR, FIXED, ELECTROLYTIC C120 50.. MF M40PCTP85PCT 50 VDCW CE63C500G (81350)		EA	REF	*	*	*	*	*	*	3	3	C120
PAFZZ	5910-668-0597	CAPACITOR, FIXED, PAPER DIELECTRIC C117.. 2000 MMF FORM20PCT 800 VDCW CN30A2202M (81349)		EA	5	*	*	*	*	*	*	3	18	C117

SECTION II

TM11-5820-430-34P

(1) SMR CODE	(2) FEDERAL STOCK NUMBER	(3) DESCRIPTION REFERENCE NUMBER & MFR. CODE USABLE ON CODE	(4) UNIT OF MEAS	(5) QTY INC IN UNIT	(6) 30-DAY DS MAINT ALLOWANCE			(7) 30-DAY GS MAINT ALLOWANCE			(8) 1-YR ALW PER 100 EQUIP CNTGCT	(9) DEPOT MAINT ALW PER 100 EQUIP	(10) ILLUSTRATION	
					(a)	(b)	(c)	(a)	(b)	(c)			(a)	(b)
					1-20	21-50	51-100	1-20	21-50	51-100			FIGURE NO.	ITEM NO.
PAFZZ	5910-668-0597	CAPACITOR, FIXED, PAPER DIELECTRIC C118.. 2000 MMF PORM20PCT 800 VDCM CN30AZ202M (81349)	EA	REF	*	*	*	*	*	*		3	18	C118
PAFZZ	5910-668-0597	CAPACITOR, FIXED, PAPER DIELECTRIC C122.. 2000 MMF PORM20PCT 800 VDCM CN30AZ202M (81349)	EA	REF	*	*	*	*	*	*		3	18	C122
PAFZZ	5910-668-0597	CAPACITOR, FIXED, PAPER DIELECTRIC C123.. 2000 MMF PORM20PCT 800 VDCM CN30AZ202M (81349)	EA	REF	*	*	*	*	*	*		3	18	C123
PAFZZ	5910-668-0597	CAPACITOR, FIXED, PAPER DIELECTRIC C128.. 2000 MMF PORM20PCT 800 VDCM CN30AZ202M (81349)	EA	REF	*	*	*	*	*	*		3	18	C128
PAFZZ	5910-101-3847	CAPACITOR, FIXED, MICA DIELECTRIC C127... 4700 MMF PORM10PCT 500 VDCM CN35B472K (81349)	EA	3	*	*	*	*	*	*		3	27	C127
PAFZZ	5910-101-3847	CAPACITOR, FIXED, MICA DIELECTRIC C129... 4700 MMF PORM10PCT 500 VDCM CN35B472K (81349)	EA	REF	*	*	*	*	*	*		3	27	C129
PAFZZ	5910-101-3847	CAPACITOR, FIXED, MICA DIELECTRIC C130... 4700 MMF PORM10PCT 500 VDCM CN35B472K (81349)	EA	REF	*	*	*	*	*	*		3	27	C130
PAFZZ	5910-668-0588	CAPACITOR, FIXED, PAPER DIELECTRIC C101.. 10,000 MMF PORM20PCT 600 VDCM CN35AF103M (81349)	EA	10	*	*	*	*	*	*		3	27	C101
PAFZZ	5910-668-0588	CAPACITOR, FIXED, PAPER DIELECTRIC C102.. 10,000 MMF PORM20PCT 600 VDCM CN35AF103M (81349)	EA	REF	*	*	*	*	*	*		3	27	C102
PAFZZ	5910-668-0588	CAPACITOR, FIXED, PAPER DIELECTRIC C103.. 10,000 MMF PORM20PCT 600 VDCM CN35AF103M (81349)	EA	REF	*	*	*	*	*	*		3	27	C103
PAFZZ	5910-668-0588	CAPACITOR, FIXED, PAPER DIELECTRIC C105.. 10,000 MMF PORM20PCT 600 VDCM CN35AF103M (81349)	EA	REF	*	*	*	*	*	*		3	27	C105
PAFZZ	5910-668-0588	CAPACITOR, FIXED, PAPER DIELECTRIC C106.. 10,000 MMF PORM20PCT 600 VDCM CN35AF103M (81349)	EA	REF	*	*	*	*	*	*		3	27	C106
PAFZZ	5910-668-0588	CAPACITOR, FIXED, PAPER DIELECTRIC C114.. 10,000 MMF PORM20PCT 600 VDCM CN35AF103M (81349)	EA	REF	*	*	*	*	*	*		3	27	C114
PAFZZ	5910-668-0588	CAPACITOR, FIXED, PAPER DIELECTRIC C119.. 10,000 MMF PORM20PCT 600 VDCM CN35AF103M (81349)	EA	REF	*	*	*	*	*	*		3	27	C119
PAFZZ	5910-668-0588	CAPACITOR, FIXED, PAPER DIELECTRIC C121.. 10,000 MMF PORM20PCT 600 VDCM CN35AF103M (81349)	EA	REF	*	*	*	*	*	*		3	27	C121
PAFZZ	5910-668-0588	CAPACITOR, FIXED, PAPER DIELECTRIC C125.. 10,000 MMF PORM20PCT 600 VDCM CN35AF103M (81349)	EA	REF	*	*	*	*	*	*		3	27	C125
PAFZZ	5910-668-0588	CAPACITOR, FIXED, PAPER DIELECTRIC C126.. 10,000 MMF PORM20PCT 600 VDCM CN35AF103M (81349)	EA	REF	*	*	*	*	*	*		3	27	C126
PAFZZ	5910-187-2745	CAPACITOR, FIXED, PAPER DIELECTRIC C116.. CONTINUED	EA	2	*	*	*	*	*	*		3	3	C116

(1) SMR CODE	(2) FEDERAL STOCK NUMBER	(3) DESCRIPTION REFERENCE NUMBER & MFR. CODE USABLE ON CODE	(4) UNIT OF MEAS	(5) QTY INC IN UNIT	(6) 30-DAY DS MAINT ALLOWANCE			(7) 30-DAY GS MAINT ALLOWANCE			(8) 1-YR ALW PER 100 EQUIP CMTGCV	(9) DGPOT MAINT ALW PER 100 EQUIP	(10) ILLUSTRATION	
					(a)	(b)	(c)	(a)	(b)	(c)			(a)	(b)
					1-20	21-50	51-100	1-20	21-50	51-100			FIGURE NO.	ITEM NO.
		CONTINUED												
PAFZZ	5910-187-2745	350,000 MMF PORN10PCT 600 VDCW CYR86035J (14655) CAPACITOR, FIXED, PAPER DIELECTRIC C124..	EA	REF	*	*	*	*	*	*		3	3	C124
PAFZZ	5935-257-9341	350,000 MMF PORN10PCT 600 VDCW CYR86035J (14655) CONNECTOR, RECEPTACLE, ELECTRICAL S0101..	EA	1	*	*	*	*	*	*		3	27	
PAFZZ	5935-258-4657	3 RD FEMALE CONT 45/64 IN LG X 1-1/8 IN DIA 91PC3F (02660) CONNECTOR, RECEPTACLE, ELECTRICAL S0102..	EA	1	*	*	*	*	*	*		3	18	
PAFZZ	5935-644-6700	8 RD FEMALE CONT 1 IN LG X 1-3/4 IN DIA 79P08F (02660) CONNECTOR, RECEPTACLE, ELECTRICAL S0103..	EA	1	*	*	*	*	*	*		3	18	
PAFZZ	5355-162-3098	8 RD MALE CONT 1 IN LG X 1-3/4 IN DIA O/A 79P08M (02660) DIAL, CONTROL NO-REF-DESIG DISC TYPE ...	EA	1	*	*	*	*	*	*		2		
PAOZZ	5960-228-3765	WITH SETSCREW 29/32 IN H X 1-1/2 IN DIA 83B180 (26926) A4B,A4C ELECTRON TUBE V102.....	EA	2	*	*	*	*	*	*		100	5	V102
PAOZZ	5960-228-3765	6J5MGT (81349) ELECTRON TUBE V108.....	EA	REF	*	*	*	*	*	*		100	5	V108
PAOZZ	5960-188-3577	6J5MGT (81349) ELECTRON TUBE V103.....	EA	3	*	*	*	*	*	*		100	5	V103
PAOZZ	5960-188-3577	6SN7MGT (81349) ELECTRON TUBE V104.....	EA	REF	*	*	*	*	*	*		100	5	V104
PAOZZ	5960-188-3577	6SN7MGT (81349) ELECTRON TUBE V106.....	EA	REF	*	*	*	*	*	*		100	5	V106
PAOZZ	5960-100-5273	6SN7MGT (81349) ELECTRON TUBE V101.....	EA	1	*	*	*	*	*	*		100	5	V101
PAOZZ	5960-100-5274	6SQ7 (81350) ELECTRON TUBE V105.....	EA	1	*	*	*	*	*	*		100	5	V105
PAOZZ	5960-100-7320	6SR7 (81350) ELECTRON TUBE V107.....	EA	1	*	*	*	*	*	*		100	5	V107
PAFZZ	5935-192-4825	BO (81349) JACK, TELEPHONE JJ-022 J102.....	EA	1	*	*	*	*	*	*		2	27	J102
PAFZZ	5935-234-1594	JJ022 (80058) A4A JACK, TELEPHONE JJ-083 J102.....	EA	1	*	*	*	*	*	*		2	3	J102
PAFZZ	5935-192-4789	JJ083 (80058) A4B,A4C JACK, TELEPHONE JJ-089 J101.....	EA	1	*	*	*	*	*	*		2	27	J101
PAOZZ	6240-057-2887	JJ089 (80058) A4A LAMP, INCANDESCENT LM-27 E106.....	EA	1	*	*	*	*	*	*		20		E106
PAOZZ	6210-299-29160	LM27 (80058) LENS, INDICATOR LIGHT NO-REF-DESIG RED..	EA	1	*	*	*	*	*	*		5		
PAFZZ		GLASS 1/2 IN DIA 11/16 IN LG X 5/8 IN DIA O/A 81-431 (72619) LIGHT, INDICATOR I101 WITHOUT LENS 1-...	EA	1	*	*	*	*	*	*		5		I101
PAFZZ		3/8 IN LG X 29/32 IN W X 1IN H 8108 (72619) REACTOR CH101 29 HY, 25 MA DC, 525 OHM..	EA	1	*	*	*	*	*	*		2	3	
		DC RESISTANCE SCC34384 (80063) A4B,A4C												

SECTION II

TM 11-5820-430-34P

(1) SMR CODE	(2) FEDERAL STOCK NUMBER	(3) DESCRIPTION REFERENCE NUMBER & MFR. CODE USABLE ON CODE		(4) UNIT OF MEAS	(5) QTY INC IN UNIT	(6) 30-DAY DS MAINT ALLOWANCE			(7) 30-DAY GS MAINT ALLOWANCE			(8) 1-YR ALW PER 100 EQUIP CNTGCT	(9) DEPOT MAINT ALW PER 100 EQUIP	(10) ILLUSTRATION	
						(a)	(b)	(c)	(a)	(b)	(c)			(a)	(b)
						1-20	21-50	51-100	1-20	21-50	51-100			FIGURE NO.	ITEM NO.
PAFZZ	5950-245-9651	REACTOR CH101 29 MY PORMSPCT, 25 MA DC, 162 OHM DC RESISTANCE 2-7/16 IN LG X 2 IN 1 X 3-9/16 IN H		EA	1	*	*	*	*	*	*		2	27	
PAFZZ	5905-279-3517	508014 (26926) RESISTOR, FIXED, COMPOSITION R142 51 OHM PORMSPCT 1/2W U/O ORDER 3462-PH-52 ONLY	A4A	EA	1	*	*	*	*	*	*		3	18	R142
PAFZZ	5905-190-8889	IC20GF10J (81349) RESISTOR, FIXED, COMPOSITION R104 100... 1/2W PORMSPCT 1/2W	A4C	EA	3	*	*	*	*	*	*		3	27	R104
PAFZZ	5905-190-8889	IC20GF10LJ (81349) RESISTOR, FIXED, COMPOSITION R147 100... 1/2W PORMSPCT 1/2W		EA	REF	*	*	*	*	*	*		3	27	R147
PAFZZ	5905-190-8889	IC20GF10LJ (81349) RESISTOR, FIXED, COMPOSITION R148 100... 1/2W PORMSPCT 1/2W		EA	REF	*	*	*	*	*	*		3	27	R148
PAFZZ	5905-299-2056	IC20GF10LJ (81349) RESISTOR, FIXED, COMPOSITION R142 200... 1/2W PORMSPCT 1W NOT APPLICABLE TO ORDER 3462-PH-52		EA	1	*	*	*	*	*	*		3	18	R142
PAFZZ	5905-279-2645	IC32GF20LJ (81349) RESISTOR, FIXED, COMPOSITION R124 330... 1/2W PORMSPCT 1W	A4A, A4C	EA	1	*	*	*	*	*	*		3	18	R124
PAFZZ	5905-299-2051	IC32GF33LJ (81349) RESISTOR, FIXED, COMPOSITION R115 470... 1/2W PORMSPCT 1W		EA	2	*	*	*	*	*	*		3	18	R115
PAFZZ	5905-299-2051	IC32GF47LJ (81349) RESISTOR, FIXED, COMPOSITION R121 470... 1/2W PORMSPCT 1W		EA	REF	*	*	*	*	*	*		3	18	R121
PAFZZ	5905-279-3511	IC32GF47LJ (81349) RESISTOR, FIXED, COMPOSITION R136 510... 1/2W PORMSPCT 1/2W		EA	1	*	*	*	*	*	*		3	18	R136
PAFZZ	5905-195-6006	IC20GF51LJ (81349) RESISTOR, FIXED, COMPOSITION R106 1000... 1/2W PORMSPCT 1/2W		EA	3	*	*	*	*	*	*		3	27	R106
PAFZZ	5905-195-6806	IC20GF102J (81349) RESISTOR, FIXED, COMPOSITION R112 1000... 1/2W PORMSPCT 1/2W	A4A	EA	REF	*	*	*	*	*	*		3	27	R112
PAFZZ	5905-195-6806	IC20GF102J (81349) RESISTOR, FIXED, COMPOSITION R131 1000... 1/2W PORMSPCT 1/2W	A4A	EA	REF	*	*	*	*	*	*		3	27	R131
PAFZZ	5905-195-6806	IC20GF102J (81349) RESISTOR, FIXED, COMPOSITION R112 1000... 1/2W PORMSPCT 1/2W	A4A	EA	2	*	*	*	*	*	*		3	18	R112
PAFZZ	5905-195-6806	IC20GF102J (81349) RESISTOR, FIXED, COMPOSITION R131 1000... 1/2W PORMSPCT 1/2W	A4B, A4C	EA	REF	*	*	*	*	*	*		3	18	R131
PAFZZ	5905-279-1876	IC20GF102J (81349) RESISTOR, FIXED, COMPOSITION R122 2200... 1/2W PORMSPCT 1/2W	A4B, A4C	EA	1	*	*	*	*	*	*		3	18	R122
PAFZZ	5905-279-3504	IC20GF222J (81349) RESISTOR, FIXED, COMPOSITION R106 4700... 1/2W PORMSPCT 1/2W	A4B, A4C	EA	4	*	*	*	*	*	*		3	22	R106

SECTION II

TM11-5820-430-34P

(1) SMR CODE	(2) FEDERAL STOCK NUMBER	(3) DESCRIPTION REFERENCE NUMBER & MFR. CODE USABLE ON CODE		(4) UNIT OF MEAS	(5) QTY INC IN UNIT	(6) 30-DAY DS MAINT ALLOWANCE			(7) 30-DAY GS MAINT ALLOWANCE			(8) 1-YR ALW PER 100 EQUIP CNTGCT	(9) DEPOT MAINT ALW PER 100 EQUIP	(10) ILLUSTRATION	
						(a)	(b)	(c)	(a)	(b)	(c)			(a)	(b)
						1-20	21-50	51-100	1-20	21-50	51-100			FIGURE NO.	ITEM NO.
PAFZZ	5905-279-3504	RESISTOR, FIXED, COMPOSITION OHM PORM5PCT 1/2W RC20GF472J (81349)	R139 4700..	EA	REF	*	*	*	*	*	*		3	22	R139
PAFZZ	5905-279-3504	RESISTOR, FIXED, COMPOSITION OHM PORM5PCT 1/2W RC20GF472J (81349)	R140 4700..	EA	REF	*	*	*	*	*	*		3	22	R140
PAFZZ	5905-279-3504	RESISTOR, FIXED, COMPOSITION OHM PORM5PCT 1/2W RC20GF472J (81349)	R141 4700..	EA	REF	*	*	*	*	*	*		3	22	R141
PAFZZ	5905-279-2019	RESISTOR, FIXED, COMPOSITION OHM PORM5PCT 1/2W RC20GF472J (81349)	R139 5100..	EA	3	*	*	*	*	*	*		3	27	R139
PAFZZ	5905-279-2019	RESISTOR, FIXED, COMPOSITION OHM PORM5PCT 1/2W RC20GF512J (81349)	R140 5100..	EA	REF	*	*	*	*	*	*		3	27	R140
PAFZZ	5905-279-2019	RESISTOR, FIXED, COMPOSITION OHM PORM5PCT 1/2W RC20GF512J (81349)	R141 5100..	EA	REF	*	*	*	*	*	*		3	27	R141
PAFZZ	5905-279-3503	RESISTOR, FIXED, COMPOSITION OHM PORM5PCT 1/2W RC20GF512J (81349)	R146 6800..	EA	1	*	*	*	*	*	*		3	18	R146
PAFZZ	5905-171-2004	RESISTOR, FIXED, COMPOSITION OHM PORM5PCT 1/2W RC20GF682J (81349)	R129 22,000	EA	1	*	*	*	*	*	*		3	18	R129
PAFZZ	5905-279-2527	RESISTOR, FIXED, COMPOSITION OHM PORM5PCT 2W RC20GF223J (81349)	R126 22,000	EA	1	*	*	*	*	*	*		3	18	R126
PAFZZ	5905-279-3499	RESISTOR, FIXED, COMPOSITION OHM PORM5PCT 1/2W RC20GF273J (81349)	R105 27,000	EA	1	*	*	*	*	*	*		3	18	R105
PAFZZ	5905-254-9201	RESISTOR, FIXED, COMPOSITION OHM PORM5PCT 1/2W RC20GF473J (81349)	R130 47,000	EA	2	*	*	*	*	*	*		3		R130
PAFZZ	5905-254-9201	RESISTOR, FIXED, COMPOSITION OHM PORM5PCT 1/2W RC20GF473J (81349)	R138 47,000	EA	REF	*	*	*	*	*	*		3	18	R138
PAFZZ	5905-299-2013	RESISTOR, FIXED, COMPOSITION OHM PORM5PCT 1W RC32GF473J (81349)	R127 47,000	EA	2	*	*	*	*	*	*		3	18	R127
PAFZZ	5905-299-2013	RESISTOR, FIXED, COMPOSITION OHM PORM5PCT 1W RC32GF473J (81349)	R128 47,000	EA	REF	*	*	*	*	*	*		3	18	R128
PAFZZ	5905-185-6955	RESISTOR, FIXED, COMPOSITION OHM PORM5PCT 2W RC42GF753J (81349)	R125 75,000	EA	1	*	*	*	*	*	*		3	18	R125
PAFZZ	5905-195-6761	RESISTOR, FIXED, COMPOSITION 000 OHM PORM5PCT 1/2W RC20GF104J (81349)	R103 100,..	EA	5	*	*	*	*	*	*		3	27	R103
PAFZZ	5905-195-6761	RESISTOR, FIXED, COMPOSITION 000 OHM PORM5PCT 1/2W RC20GF104J (81349)	R107 100,..	EA	REF	*	*	*	*	*	*		3	27	R107
PAFZZ	5905-195-6761	RESISTOR, FIXED, COMPOSITION CONTINUED	R113 100,..	EA	REF	*	*	*	*	*	*		3	27	R113

SECTION II

T M 1 1 - 5 8 2 0 - 4 3 0 - 3 4 P

(1) SMR CODE	(2) FEDERAL STOCK NUMBER	(3) DESCRIPTION REFERENCE NUMBER & MFR. CODE USABLE ON CODE		(4) UNIT OF MEAS	(5) QTY INC IN UNIT	(6) 30-DAY DS MAINT ALLOWANCE			(7) 30-DAY GS MAINT ALLOWANCE			(8) 1-YR ALW PER 100 EQUIP CNTGCT	(9) DEPOT MAINT ALW PER 100 EQUIP	(10) ILLUSTRATION	
						(a)	(b)	(c)	(a)	(b)	(c)			(a)	(b)
						1-20	21-50	51-100	1-20	21-50	51-100			FIGURE NO.	ITEM NO.
		CONTINUED													
PAFZZ	5905-195-6761	000 OHM PORM5PCT 1/2W RC20GF104J (81349)	R116 100...	EA	REF	*	*	*	*	*	*		3	27	R116
PAFZZ	5905-195-6761	RESISTOR, FIXED, COMPOSITION 000 OHM PORM5PCT 1/2W RC20GF104J (81349)	R117 100...	EA	REF	*	*	*	*	*	*		3	27	R117
PAFZZ	5905-171-2003	RESISTOR, FIXED, COMPOSITION 000 OHM PORM5PCT 1/2W RC20GF104J (81349)	R103 200...	EA	2	*	*	*	*	*	*		3	27	R103
PAFZZ	5905-171-2003	RESISTOR, FIXED, COMPOSITION 000 OHM PORM5PCT 1/2W RC20GF204J (81349)	R108 200... A4A	EA	REF	*	*	*	*	*	*		3	27	R108
PAFZZ	5905-192-0667	RESISTOR, FIXED, COMPOSITION 000 OHM PORM5PCT 1/2W RC20GF204J (81349)	R108 220... A4A	EA	2	*	*	*	*	*	*		3	22	R108
PAFZZ	5905-192-0667	RESISTOR, FIXED, COMPOSITION 000 OHM PORM5PCT 1/2W RC20GF224J (81349)	R145 220... A48, A4C	EA	REF	*	*	*	*	*	*		3	18	R145
PAFZZ	5905-190-8865	RESISTOR, FIXED, COMPOSITION 000 OHM PORM5PCT 1/2W RC20GF224J (81349)	R110 270... A48, A4C	EA	6	*	*	*	*	*	*		3	27	R110
PAFZZ	5905-190-8865	RESISTOR, FIXED, COMPOSITION 000 OHM PORM5PCT 1/2W RC20GF274J (81349)	R114 270...	EA	REF	*	*	*	*	*	*		3	27	R114
PAFZZ	5905-190-8865	RESISTOR, FIXED, COMPOSITION 000 OHM PORM5PCT 1/2W RC20GF274J (81349)	R118 270...	EA	REF	*	*	*	*	*	*		3	27	R118
PAFZZ	5905-190-8865	RESISTOR, FIXED, COMPOSITION 000 OHM PORM5PCT 1/2W RC20GF274J (81349)	R119 270...	EA	REF	*	*	*	*	*	*		3	27	R119
PAFZZ	5905-190-8865	RESISTOR, FIXED, COMPOSITION 000 OHM PORM5PCT 1/2W RC20GF274J (81349)	R120 270...	EA	REF	*	*	*	*	*	*		3	27	R120
PAFZZ	5905-190-8865	RESISTOR, FIXED, COMPOSITION 000 OHM PORM5PCT 1/2W RC20GF274J (81349)	R135 270...	EA	REF	*	*	*	*	*	*		3	27	R135
PAFZZ	5905-279-2514	RESISTOR, FIXED, COMPOSITION 000 OHM PORM5PCT 1/2W RC20GF274J (81349)	R109 560...	EA	2	*	*	*	*	*	*		3	18	R109
PAFZZ	5905-279-2514	RESISTOR, FIXED, COMPOSITION 000 OHM PORM5PCT 1/2W RC20GF564J (81349)	R132 560...	EA	REF	*	*	*	*	*	*		3		R132
PAFZZ	5905-192-0390	RESISTOR, FIXED, COMPOSITION PORM5PCT 1/2W RC20GF564J (81349)	R101 1 MEG.	EA	1	*	*	*	*	*	*		3	27	R101
PAFZZ	5905-279-1883	RESISTOR, FIXED, COMPOSITION MEG PORM5PCT 1/2W RC20GF105J (81349)	R102 3.3...	EA	2	*	*	*	*	*	*		3	18	R102
PAFZZ	5905-279-1883	RESISTOR, FIXED, COMPOSITION RC20GF335J (81349)	R133 3.3...	EA	REF	*	*	*	*	*	*		3	18	R133
		CONTINUED													

S E C T I O N I I

TM 11-5820-430-34P

(1) SMR CODE	(2) FEDERAL STOCK NUMBER	(3) DESCRIPTION REFERENCE NUMBER & MFR. CODE USABLE ON CODE	(4) UNIT OF MEAS	(5) QTY INC IN UNIT	(6) 30-DAY DS MAINT ALLOWANCE			(7) 30-DAY GS MAINT ALLOWANCE			(8) 1-YR ALW PER 100 EQUIP CNTGCT	(9) DEPOT MAINT ALW PER 100 EQUIP	(10) ILLUSTRATION	
					(a)	(b)	(c)	(a)	(b)	(c)			(a)	(b)
					1-20	21-50	51-100	1-20	21-50	51-100			FIGURE NO.	ITEM NO.
		CONTINUED												
PAFZZ	5905-542-8050	MEG PORMSPCT 1/2W RC20GF335J (81349) RESISTOR, VARIABLE, COMPOSITION R137..... 100,000 OHM PORM10PCT 2W	EA	1	*	*	*	*	*	*	3	18	R137	
PAFZZ	5905-557-4811	RV4NAYS0104C (81349) RESISTOR, VARIABLE, COMPOSITION R134..... 500,000 OHM PORM10PCT 2W	EA	1	*	*	*	*	*	*	3	18	R134	
PAFZZ	5905-577-0927	RV4AUSD504C (81349) RESISTOR, VARIABLE, COMPOSITION R111 1.. MEG PORM20PCT 2W	EA	2	*	*	*	*	*	*	3	18	R111	
PAFZZ	5905-577-0927	RV4AUSD1050 (81349) RESISTOR, VARIABLE, COMPOSITION R123 1.. MEG PORM20PCT 2W	EA	REF	*	*	*	*	*	*	3	18	R123	
PAFZZ	5910-682-2543	RV4AUSD1050 (81349) RETAINER, CAPACITOR H102 1-7/16 IN DIA X 3/4 IN H	EA	1	*	*	*	*	*	*	2		H102	
PAFZZ	5960-223-5970	VR3 (90201) A4A,A4B RETAINER, ELECTRON TUBE H102H 2-9/16 IN. LG X 2-1/8 IN W X 3/4 IN H O/A	EA	1	*	*	*	*	*	*	2			
PCOZZ	5340-473-8107	SMB166142 (80063) A4C MOUNT, SHOCK A101 2-3/8 IN X 2-3/8 IN... RUBBER COMPOUND CUSHION WITH 1-1/2 IN DIA CTR SLEEVE	EA	4	*	*	*	*	*	*	3		A101	
PCOZZ	5340-473-8107	153PH24 (76005) A4B,A4C MOUNT, SHOCK A102 2-3/8 IN X 2-3/8 IN... RUBBER COMPOUND CUSHION WITH 1-1/2 IN DIA CTR SLEEVE	EA	REF	*	*	*	*	*	*	3		A102	
PCOZZ	5340-473-8107	153PH24 (76005) A4B,A4C MOUNT, SHOCK A103 2-3/8 IN X 2-3/8 IN... RUBBER COMPOUND CUSHION WITH 1-1/2 IN DIA CTR SLEEVE	EA	REF	*	*	*	*	*	*	3		A103	
PCOZZ	5340-473-8107	153PH24 (76005) A4B,A4C MOUNT, SHOCK A104 2-3/8 IN X 2-3/8 IN... RUBBER COMPOUND CUSHION WITH 1-1/2 IN DIA CTR SLEEVE	EA	REF	*	*	*	*	*	*	3		A104	
PAFZZ	5935-129-93-58	153PH24 (76005) A4B,A4C SOCKET, ELECTRON TUBE X101.....	EA	7	*	*	*	*	*	*	3		X101	
PAFZZ	5935-129-9358	TS101P02 (81350) SOCKET, ELECTRON TUBE X102.....	EA	REF	*	*	*	*	*	*	3		X102	
PAFZZ	5935-129-9358	TS101P02 (81350) SOCKET, ELECTRON TUBE X103.....	EA	REF	*	*	*	*	*	*	3		X103	
PAFZZ	5935-129-9358	TS101P02 (81350) SOCKET, ELECTRON TUBE X104.....	EA	REF	*	*	*	*	*	*	3		X104	
PAFZZ	5935-129-9358	TS101P02 (81350) SOCKET, ELECTRON TUBE X105.....	EA	REF	*	*	*	*	*	*	3		X105	
PAFZZ	5935-129-9358	TS101P02 (81350) SOCKET, ELECTRON TUBE X106.....	EA	REF	*	*	*	*	*	*	3		X106	
PAFZZ	5935-129-9358	TS101P02 (81350) SOCKET, ELECTRON TUBE X108.....	EA	REF	*	*	*	*	*	*	3		X108	
PAFZZ	5935-129-3081	TS101P02 (81350) SOCKET, ELECTRON TUBE X107 3 PIN CONT ..	EA	1	*	*	*	*	*	*	3	18	X107	
		CONTINUED												

SECTION II

TMI 1-5820-430-34P

(1) SMR CODE	(2) FEDERAL STOCK NUMBER	(3) DESCRIPTION REFERENCE NUMBER & MFR. CODE USABLE ON CODE		(4) UNIT OF MEAS	(5) QTY INC IN UNIT	(6) 30-DAY DS MAINT ALLOWANCE			(7) 30-DAY GS MAINT ALLOWANCE			(8) 1-YR ALW PER 100 EQUIP CNTGCT	(9) DEPOT MAINT ALW PER 100 EQUIP	(10) ILLUSTRATION		
						(a)	(b)	(c)	(a)	(b)	(c)			(a)	(b)	
						1-20	21-50	51-100	1-20	21-50	51-100			FIGURE NO.	ITEM NO.	
		CONTINUED														
PAFZZ	5307-638-2056	31/64 IN H X 1-9/32 IN W X 1-7/8 IN EXCL TERM 77M1P47M (02660) STUD, THREADED M1028 SS 3-1/4 IN LG Q/A A4C 32 (97983)		EA	1	*	*	*	*	*	*		2			
PAFZZ	5940-537-6599	TERMINAL BOARD E103 18 TURRET TERM 3-... 7/16 IN LG X 2-3/8 IN W X 7/16 IN THK Q/A NOT APPLICABLE TO ORDER 3462-PH-52 A4C 888808 (26926)		EA	1	*	*	*	*	*	*		3		E103	
PAFZZ	5950-227-8205	TRANSFORMER, AUDIO FREQUENCY T101 INPUT. TYPE 200 OHMS PRI AND SECD 25 MD PRI 2-... 1/4 IN H X 2-1/4 IN LG X 1-5/8 IN W A4C SC834383 (80063)		EA	1	*	*	*	*	*	*		3	3	T101	
PAFZZ	5950-199-0051	TRANSFORMER, AUDIO FREQUENCY T101 LINE.. TYPE 200 OHM PRI IMPEDANCE 2-7/8 IN H X 2-7/16 IN LG X 2 IN W A4B,A4C 2D131 (88431)		EA	1	*	*	*	*	*	*		3	3	T101	
PAFZZ	5950-333-9725	TRANSFORMER, AUDIO FREQUENCY T104 PRI... 10,000 OHMS SECD 80,000 OHMS 2-7/16 IN LG X 2 IN W X 2-7/8 IN H A4A 2A109 (88431)		EA	1	*	*	*	*	*	*		3	3	T104	
PAFZZ	5950-250-1817	TRANSFORMER, AUDIO FREQUENCY T104 PLATE. COUPLING TYPE 10,000 OHM PRI IMPEDANCE 40,000 OHM CT SECD 2-1/4 IN H X 1-1/2 IN LG X 1-5/8 IN W A4A SC834382 (80063)		EA	1	*	*	*	*	*	*		3	3	T104	
PAFZZ	5950-244-5911	TRANSFORMER, AUDIO FREQUENCY T102 LINE.. TYPE 18,000 OHM CT PRI IMPEDANCE 500 OHM SECD IMPEDANCE 4 IN H X 2-9/16 IN LG X 2 IN W A4B,A4C 2A151 (88431)		EA	1	*	*	*	*	*	*		3		T102	
PAFZZ	5950-645-5210	TRANSFORMER, AUDIO FREQUENCY T102 PLATE. COUPLING TYPE 18,000 OHM SECD IMPEDANCE 2-3/4 IN H X 2-1/4 IN LG X X 2.11 IN W A4A 14570 (80089)		EA	1	*	*	*	*	*	*		3	3	T102	
PAFZZ	5950-199-2161	TRANSFORMER, POWER, STEP-DOWN AND STEP-UP. T103 PRI WND 115V, 50-60 CPS SINGLE PH 3 SECD WND, 500V AT 25 MA CT, 63V AT 55 AMP 5V AT 2 AMP CT A4B,A4C 16213 (80089)		EA	1	*	*	*	*	*	*		3	3	T103	
PAFZZ	5950-577-6176	TRANSFORMER, POWER, STEP-DOWN AND STEP-UP. T103 PRI 115V, 50-60 CYC, 1 PH SECD 500V CT 0.300 AMP 6.3V CT 3.5 AMP 5V, 2 AMF A4C ICC85239 (80063)		EA	1	*	*	*	*	*	*		3	3	T103	

SECTION //

INDEX - FEDERAL STOCK NUMBER AND REFERENCE NUMBER
CROSS-REFERENCE TO FIGURE AND ITEM NUMBER

STOCK NUMBER	FIGURE NO.	ITEM NO.	STOCK NUMBER	FIGURE NO.	ITEM NO.
5307-638-2056			5910-128-3054	27	C110
5340-473-8107		A101	5910-128-3054	27	C120
5340-473-8107		A102	5910-187-2745	3	C116
5340-473-8107		A103	5910-187-2745	3	C124
5340-473-8107		A104	5910-543-9267	3	C110
5355-162-3098			5910-543-9267	3	C120
5305-171-2003	27	R103	5910-543-9788	3	C108
5905-171-2003	27	R108	5910-543-9788	3	C109
5905-171-2004	18	R129	5910-543-9788	3	C111
5905-185-6955	18	R125	5910-543-9788	3	C112
5905-190-8865	27	R110	5910-543-9788	3	C113
5905-190-8865	27	R114	5910-543-9788	3	C115
5905-190-8865	27	R118	5910-668-0588	27	C101
5905-190-8865	27	R119	5910-668-0588	27	C102
5905-190-8865	27	R120	5910-668-0588	27	C103
5905-190-8865	27	R135	5910-668-0588	27	C105
5905-190-8889	27	R104	5910-668-0588	27	C106
5905-193-8689	27	R147	5910-660-0588	27	C114
5905-190-8889	27	R148	5910-668-0588	27	C149
5905-192-0390	27	R101	5910-668-0588	27	C121
5905-192-0667	18	R145	5910-668-0588	27	C125
5905-192-0667	22	R108	5910-668-0588	27	C126
5905-195-6761	27	R103	5910-668-0597	18	C117
5905-195-6761	27	R107	5910-668-0597	18	C118
5905-195-6761	27	R113	5910-668-0597	18	C122
5905-195-6761	27	R116	5910-668-0597	18	C123
5905-195-6761	27	R117	5910-668-0597	18	C128
5905-195-6806	14	R112	5910-682-2543		H102
5905-195-6806	18	R131	5935-129-3081	18	X107
5905-195-6806	27	R106	5935-129-9350		X101
5905-195-6806	27	R112	5935-129-9358		X102
5905-195-6806	27	R131	5935-129-9358		X103
5905-254-9201		R130	5935-129-9358		X104
5905-254-9201	18	R138	5935-129-9358		X105
5905-279-1876	18	R122	5935-129-9358		X106
5905-279-1883	18	R102	5935-129-9358		X108
5905-279-1883	18	R133	5935-192-4789	27	J101
5905-279-2019	27	R139	5935-192-4825	27	J102
5905-279-2019	27	R140	5935-234-1594	3	J102
5905-279-2019	27	R141	5935-257-9341	27	
5935-279-2514		R132	5935-258-4657	18	
5905-279-2514	18	R109	5935-644-6700	18	
5905-279-2527	18	R126	5940-537-6599		E103
5905-279-2645	18	R124	5950-199-0051	3	T101
5905-279-3499	18	R105	5950-199-2161	3	T103
5935-279-3533	18	R146	5950-227-8205	3	T101
5935-279-3504	22	R106	5950-228-1865	3	
5905-279-3504	22	R139	5950-244-5911		T102
5905-279-3504	22	R140	5950-245-9651	27	
5905-279-3504	22	R141	5950-250-1817	3	T104
5935-279-3511	18	R136	5950-333-9725	3	T104
5905-279-3517	18	R142	5950-577-6176	3	T103
5905-299-2013	18	R127	5950-645-5210	3	T102
5905-299-2013	18	R128	5960-100-5273	5	V101
5905-299-2051	18	R115	5960-100-5274	5	V105
5905-299-2051	18	R121	5960-100-7320	5	V107
5905-299-2056	18	R142	5960-188-3577	5	V103
5905-542-8050	18	R137	5960-188-3577	5	V104
5905-557-4811	18	R134	5960-188-3577	5	V106
5905-577-0927	18	R111	5960-223-5970		
5905-577-0927	18	R123	5960-228-3765	5	V102
5910-101-3847	27	C127	5960-228-3765	5	V108
5910-101-3847	27	C129	6210-299-2916		
5910-101-3847	27	C130	6210-299-4099		I101
5910-112-7839	3	C104	6240-057-2887		E106
5910-112-7839	3	C107	6625-668-6716	27	M101
5910-128-3054	27	C104	6625-668-9278	3	M101
5910-128-3054	27	C107			

By Order of the Secretary of the Army:

CREIGHTON W. ABRAMS
General, United States Army
Chief of Staff

Official:

VERNE L. BOWERS
Major General, United States Army
The Adjutant General

Distribution:

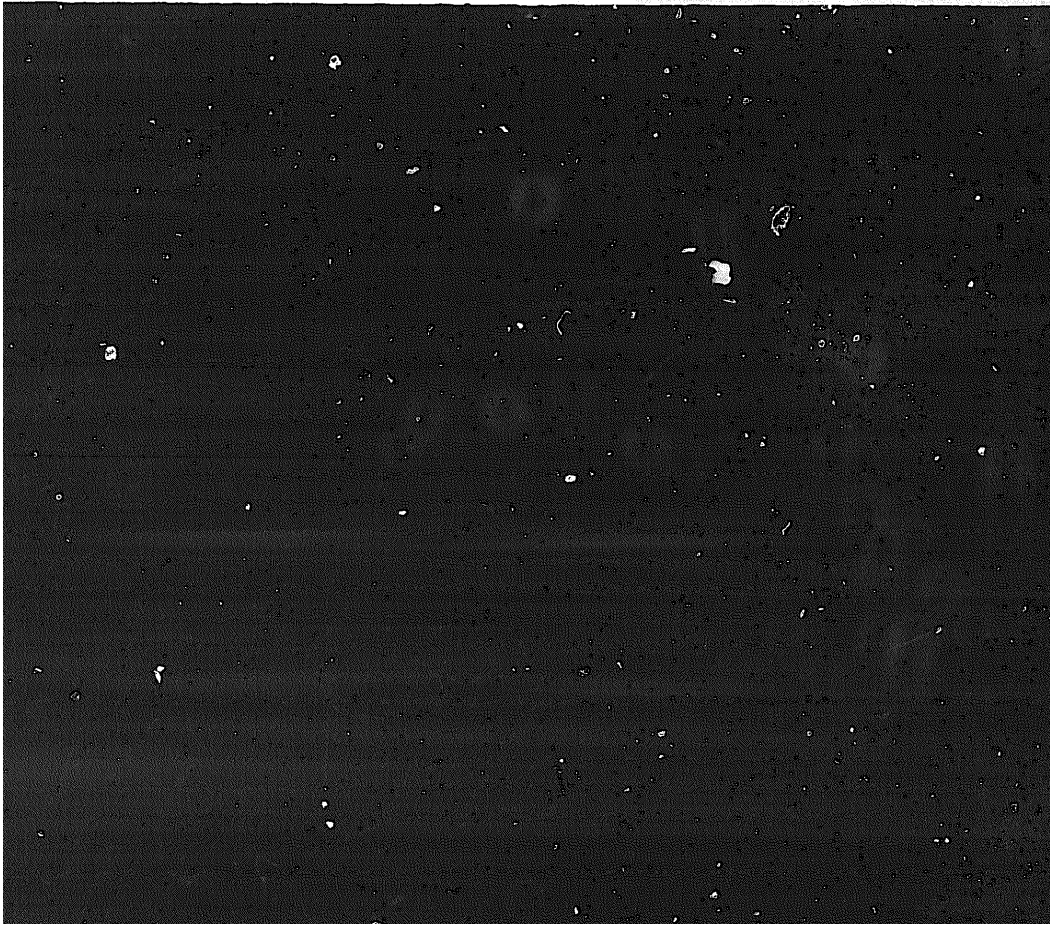
To be distributed in accordance with DA Form 12-51 (qty rqr block no. 739) Direct and General Support Maintenance requirements for BC-614.

END

11-26-82

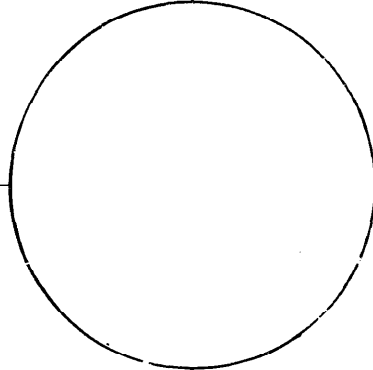
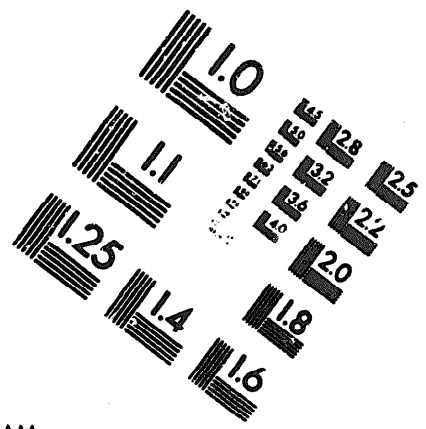
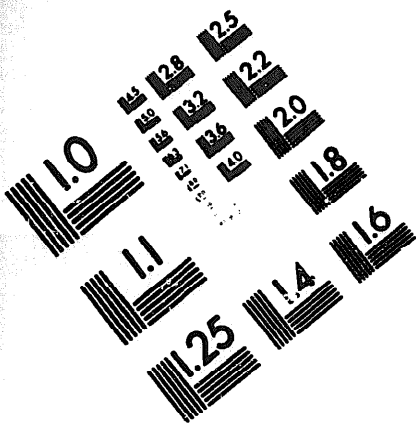
DATE





DEPARTMENT OF THE ARMY

MICROFORM TEST TARGET



150 MM

1.0 mm (e= .81 mm)

ABCDEFGHIJKLMN OPQRSTUVWXYZ 1234567890
abcdefghijklmnopqrstuvwxyz \$%&' /%# 1/2 1/4 3/4 — = + x & @ *

1.5 mm (e= 1.09 mm)

ABCDEFGHIJKLMN OPQRSTUVWXYZ 1234567890
abcdefghijklmnopqrstuvwxyz \$%&' /%# 1/2 1/4 3/4 — = + x & @ *

2.0 mm (e= 1.37 mm)

ABCDEFGHIJKLMN OPQRSTUVWXYZ
abcdefghijklmnopqrstuvwxyz
1234567890 \$%&' /%# 1/2 1/4 3/4 — = + x & @ *

2.5 mm (e= 1.77 mm)

ABCDEFGHIJKLMN OPQRSTUVWXYZ
abcdefghijklmnopqrstuvwxyz
1234567890 \$%&' /%# 1/2 1/4 3/4 — = + x & @ *

1.0 mm (e= .81 mm)

ABCDEFGHIJKLMN OPQRSTUVWXYZ 1234567890
abcdefghijklmnopqrstuvwxyz \$%&' /%# 1/2 1/4 3/4 — = + x & @ *

1.5 mm (e= 1.09 mm)

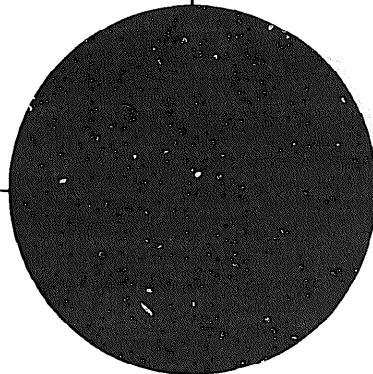
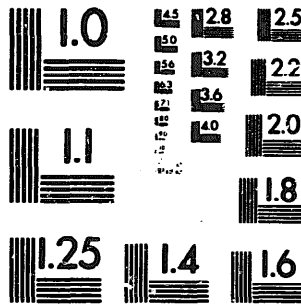
ABCDEFGHIJKLMN OPQRSTUVWXYZ 1234567890
abcdefghijklmnopqrstuvwxyz \$%&' /%# 1/2 1/4 3/4 — = + x & @ *

2.0 mm (e= 1.37 mm)

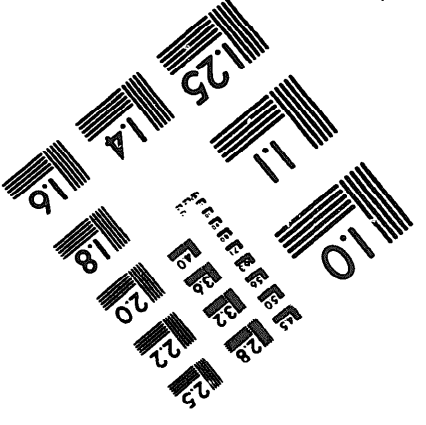
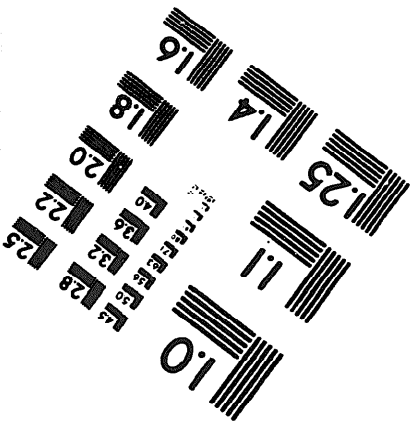
ABCDEFGHIJKLMN OPQRSTUVWXYZ
abcdefghijklmnopqrstuvwxyz
1234567890 \$%&' /%# 1/2 1/4 3/4 — = + x & @ *

2.5 mm (e= 1.77 mm)

ABCDEFGHIJKLMN OPQRSTUVWXYZ
abcdefghijklmnopqrstuvwxyz
1234567890 \$%&' /%# 1/2 1/4 3/4 — = + x & @ *



200 MM



250 MM